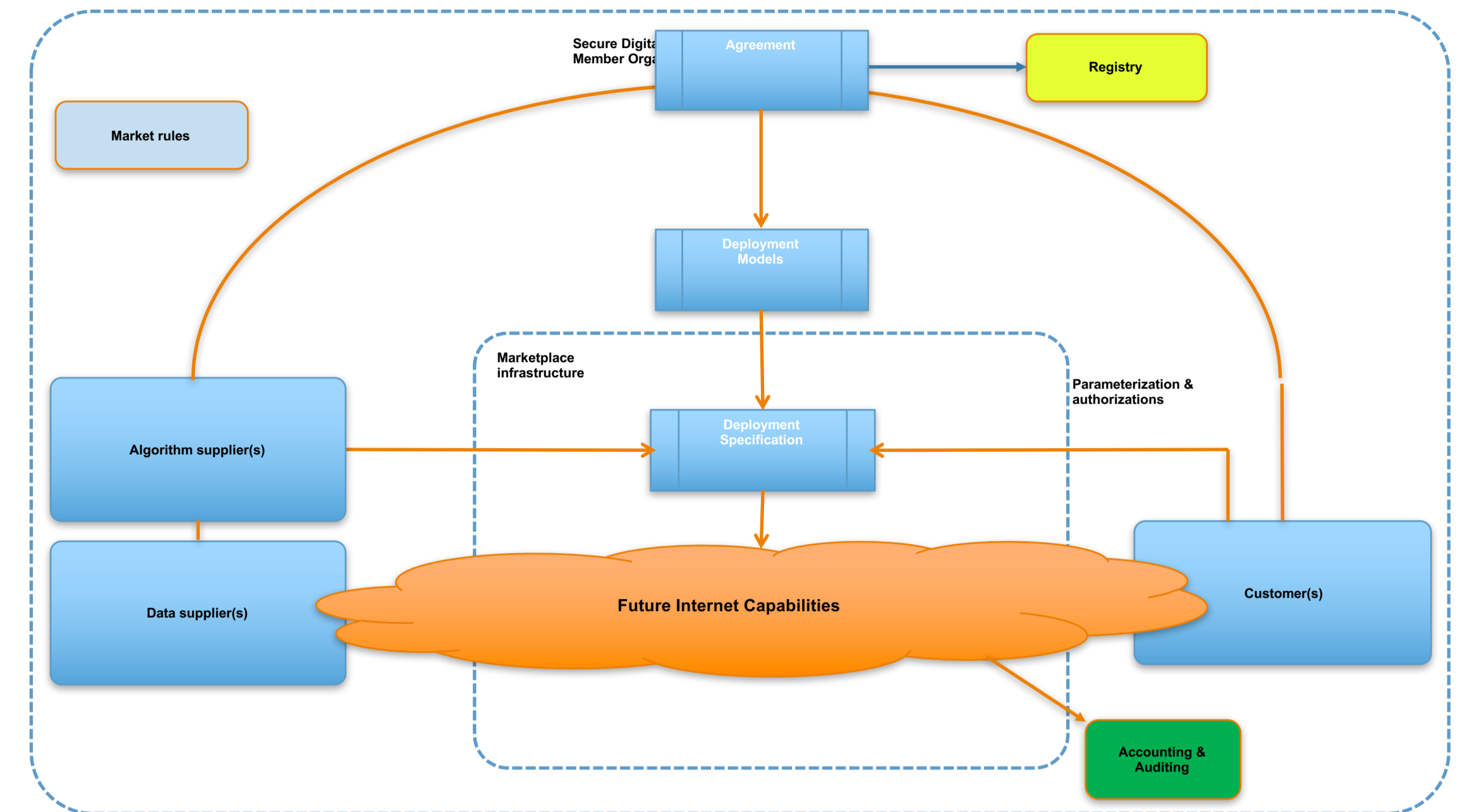


A Normative Agent-based Model for Sharing Data in Secure Trustworthy Digital Market Places

Ameneh Deljoo¹, Tom van Engers², Leon Gommans^{1,3}, Cees de Laat¹
¹System and Network engineering group, University of Amsterdam
²Leibniz Center for Law, University of Amsterdam
³Air France-KLM

- Bring competitors together to share data to achieve a common goal.
- Use shared data for different purposes.
- Create a trusted infrastructure to process data.



Goal

- Development of an extended version of the BDI agent model (N-BDI*)
- Extension of the BDI control loop
- Enabling us to study how norms can be used to create a social systems.

Research Questions

1. How do the rules that express the social system's policy impact the different members' behavior and what is the emergent behavior of the regulated systems?
2. How can agents identify non-compliant society members and respond to them by adapting their behavior?
3. What are the limits of controlling these social systems, equilibria and flipping points?

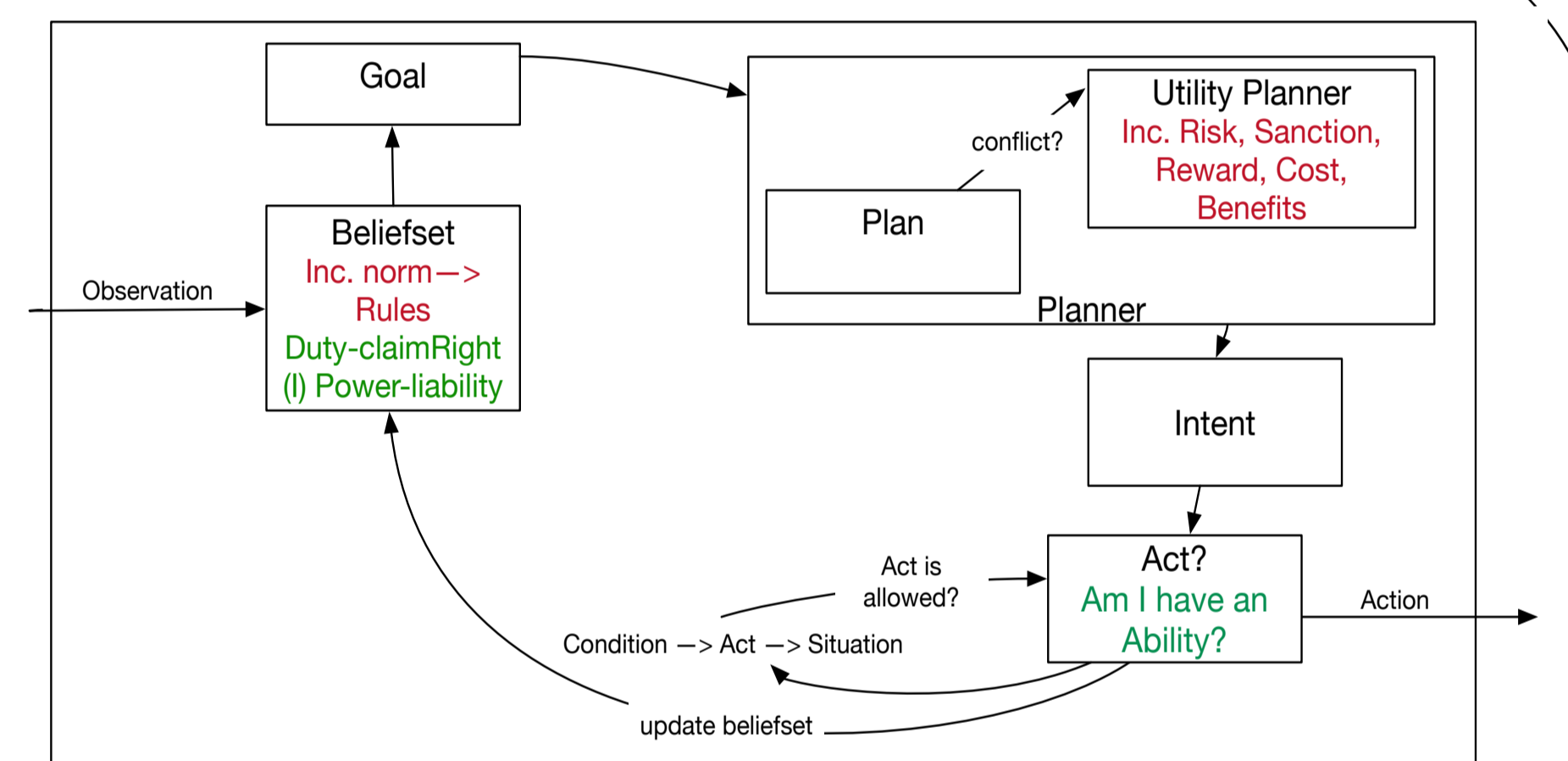
Modified Control Loop in N-BDI*

- We have divided an agent planner component in two sub-components:
 1. Planner to generate plans based on the agent preferences
 2. Select the most appropriate plan based on the plan utility
- We have developed a normative belief-set.

Algorithm 1: Modified control loop for the extended BDI agent (N-BDI*), where O = observation, B = Belief set, G = Goal set, P = Plan set, and A_p = Actions.

```

Given an agent {O,B,G,P,Ap,Norms}
repeat
  O := Observe(O + Norms);
  B := Revise(B, O);
  G := Generate G (B);
  P := ∀g ∈ G → generate P(B, G);
  P := Calculate Up ∀ p ∈ P(B, G, P);
  PrefP := Update P to PrefP(B, G, Ap, P);
  B := revise(B, PrefP);
  Ap := (norms(Power), Allowed?);
  take (Ap);
until forever;
    
```



Normative BDI*

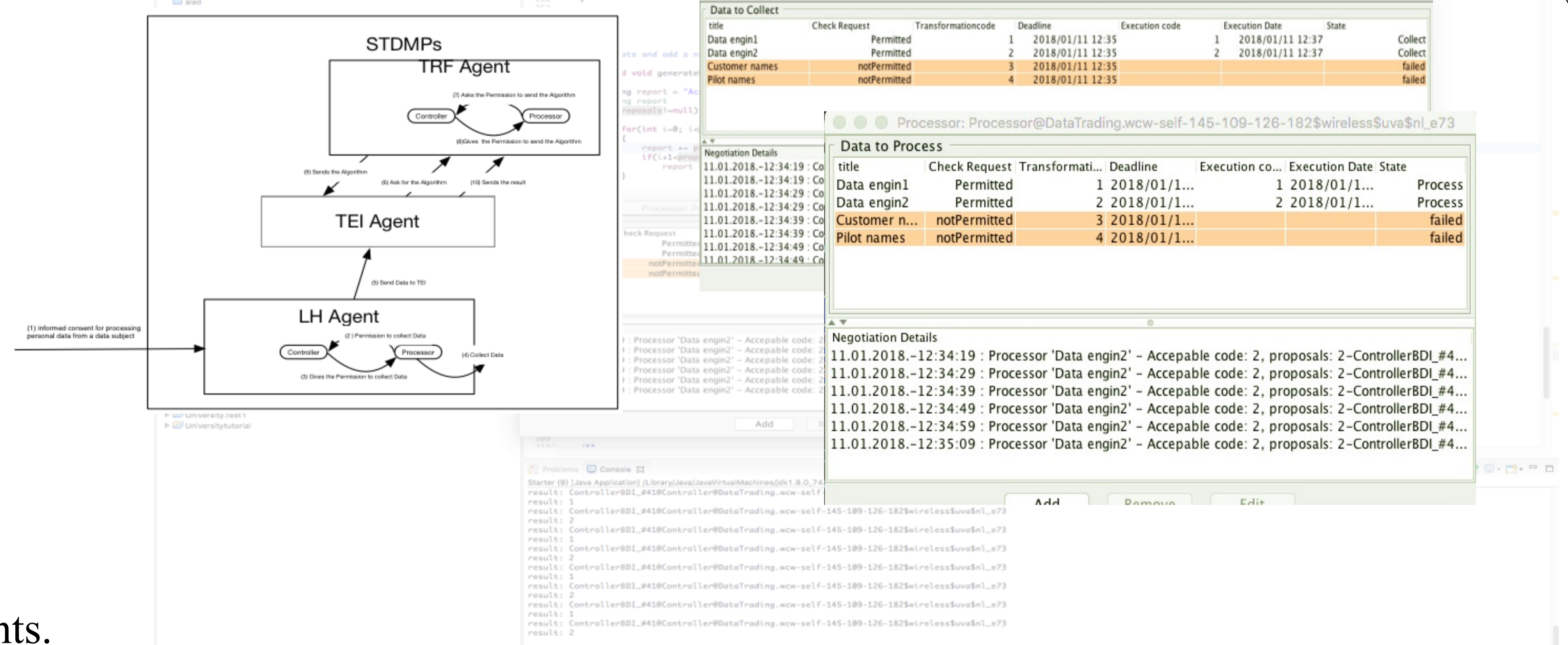
Simulation

Setup

- Implement the STDMP's agent with BDI agent in Jadex.
- Two BDI agents as the Controller and Processor.
- Norm engine has been implemented as a part of the belief-set.
- STDMP formed by different airlines companies.

Aim

- Monitor the negotiation process between the agents.
- Check each requested transaction against the GDPR.



Secure Digital Market Place Schema (Jadex)

Ameneh Deljoo is a Ph.D student at University of Amsterdam.

Research Area: Computational Trust model, Normative Agent Based Model, Cyber Security Alliance

Her supervisors are Prof. C. de Laat (UvA), Prof. T. van Engers (UvA) and Dr. L. Gommans (KLM).

Deljoo A., van Engers T., van Doesburg R., Gommans L. and de Laat C. (2018). **A Normative Agent-based Model for Sharing Data in Secure Trustworthy Digital Market Places.** In *Proceedings of the 10th International Conference on Agents and Artificial Intelligence - Volume 1: ICAART*, ISBN 978-989-758-275-2, pages 290-296.